

LIST OF IMAGES OF BERRYS BAY

The works listed here are in the collections of major art galleries or in private collections. Most images cannot be shown as they are under copyright but they can be viewed by following the links in the main article or by undertaking an internet search using the artists' names or the terms "Berrys Bay" or "images of Berrys Bay".

It will be noted that the name Berrys Bay sometimes appears with an apostrophe and sometimes not. In accordance with the guidelines of the Geographical Names Board, the official name today is Berrys Bay but artists in the past generally used an apostrophe.

PAINTERS

Julian **Ashton** 1851-1942

Boats at Berry's Bay. Date unknown

William **Ashton** 1881-1963

Berry's Bay, Sydney. Date unknown

Berry's Bay, Sydney Harbour. Date unknown

Morning glitter, Berry's Bay. 1947

Morning light. Berry's Bay. Date unknown

Roy **de Maistre** 1894-1968

Syncromy, Berry's Bay 1919.

Berry's Bay. c1920

Boatsheds, Berry's Bay, 1919

Elioth **Grüner** 1882-1939

Berry's Bay. 1915

Frank **Hinder** . 1906-1992

Berry's Bay with Oil Tanks. 1938

James R **Jackson.** 1882-1975

Robert H.**Johnson** 1890-1964

Berry's Bay. Date unknown

Paul **Joyce** *Harbour Bridge, View from Berry's Bay.* Date unknown

Lionel **Lindsay** 1874-1961

A nook of Berry's Bay. 1922. Also known as *Old Foreshore, Berry's Bay*

Percy **Lindsay**. 1870-1952

Shipyards, Berry Bay. c1927

Sydney **Long**. 1871-1955

Across Berry's Bay to the Sobraon. 1939.

Conrad **Martens** 1801-1878

Darling Harbour from Berry's Bay. c1855

F. Meade **Norton**.

Boatsheds in Berry's Bay. 1920's

Lloyd **Rees** 1895-1988

The rock faces and cliffs around Sydney Harbour were a favoured subject of Rees. His drawings and paintings include:

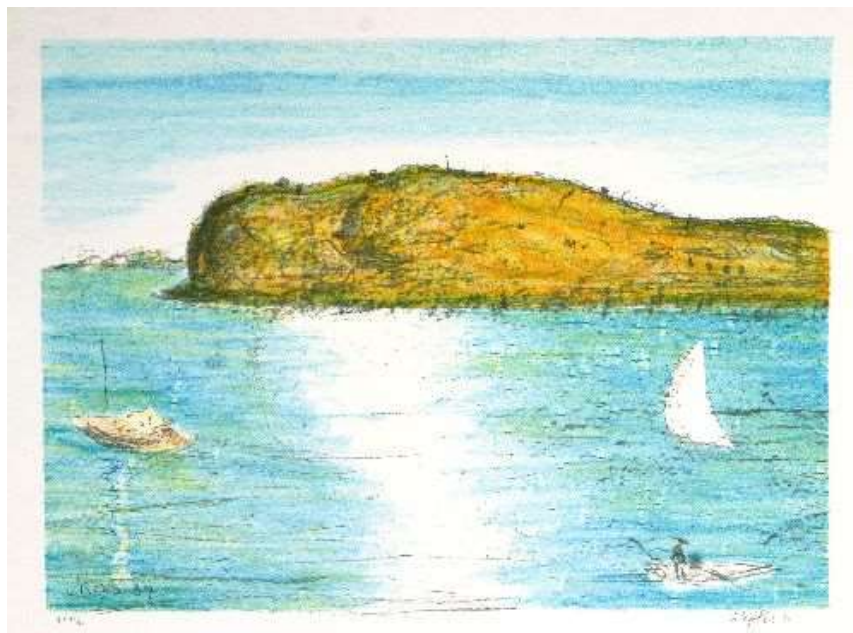
Balls Head, Berry's Bay. 1931.

The Hillside. 1932

The Sobraon, Berry's Bay. Sydney. 1932

The Tingira, Berry's Bay. Sydney. 1933

Western Bays and Headlands. 1933.



Balls Head Berrys Bay. Lithographic print 1987 Fred Genis

John **Santry** 1910-1990

Berry's Bay, Sydney Harbour . Date unknown

Cameron **Sparks**. 1930-

Painted many pictures in the area. Among those most relevant to this discussion are:

Gibraltar Rediscovered, BP site, Berry's Bay. 1997

Berry's Bay, 1973

Berrys Bay, Grooms Boatshed, 1992

C.E.S. **Tindall**. 1863-1951

From Berry's Bay. c1914. A similar view as the Percy Lindsay painting.

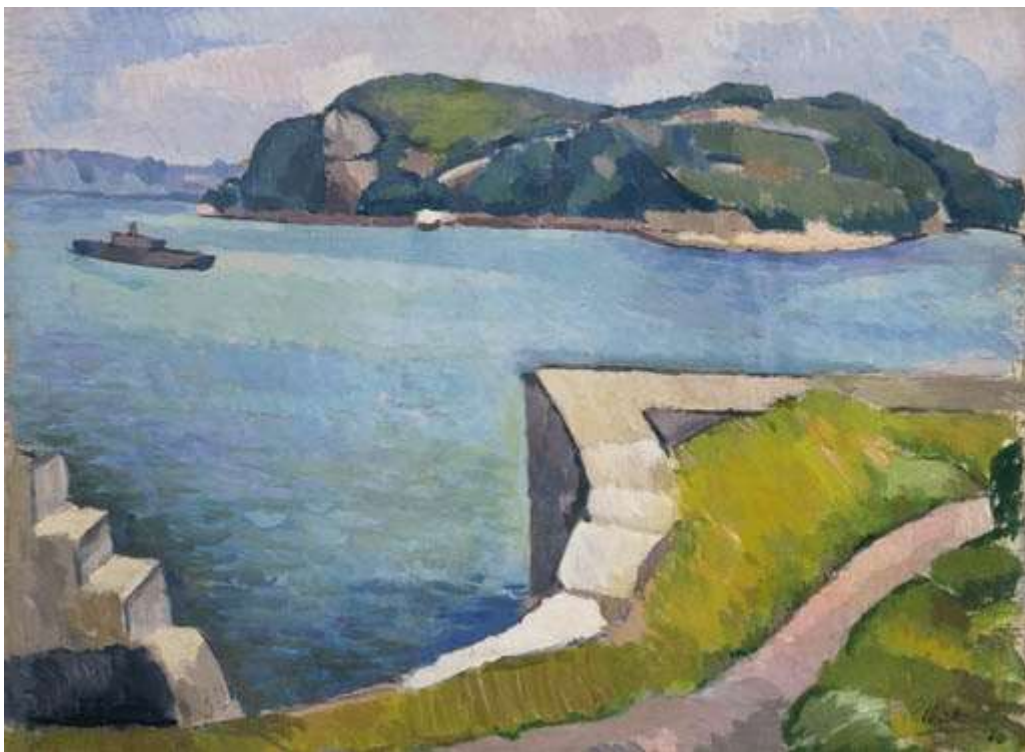
Sydney **Ure Smith** 1887-1949

Ships in Berry's Bay.

Roland **Wakelin**. 1887-1971

Down the hills to Berry's Bay. 1916

Berry's Bay. Many paintings with this or similar titles. 1919, 1934, 1945



Balls Head from Blues Point, Sydney

Rhys **Williams**. 1894-1976

Afternoon Berrys Bay. Date unknown

PHOTOGRAPHERS

Harold **Cazneaux** Photographed the area between 1905 and 1915. His *Berry's Bay* was taken from the present Noakes site. Another is from the northern arm of the bay.

Henri **Mallard** Berry's Bay. c1930. An elevated view of the Noakes site

F. D. **Collins** An untitled Harbour scene of Berry's Bay. c1910. A view of the Noakes site possibly taken on water to the south

E. W. **Searle** Photographed the HMAS Tingira in Berrys Bay in 1935. This was the former Sobraon

Henry **King** 1888 Balmain Regatta. The yacht "Electra" and Sydney from Berry's Bay (Powerhouse Museum Collection, Sydney)

George Washington **Wilson "G.W.W."** *Berry's Bay.* c1879 (Powerhouse Museum Collection, Sydney)



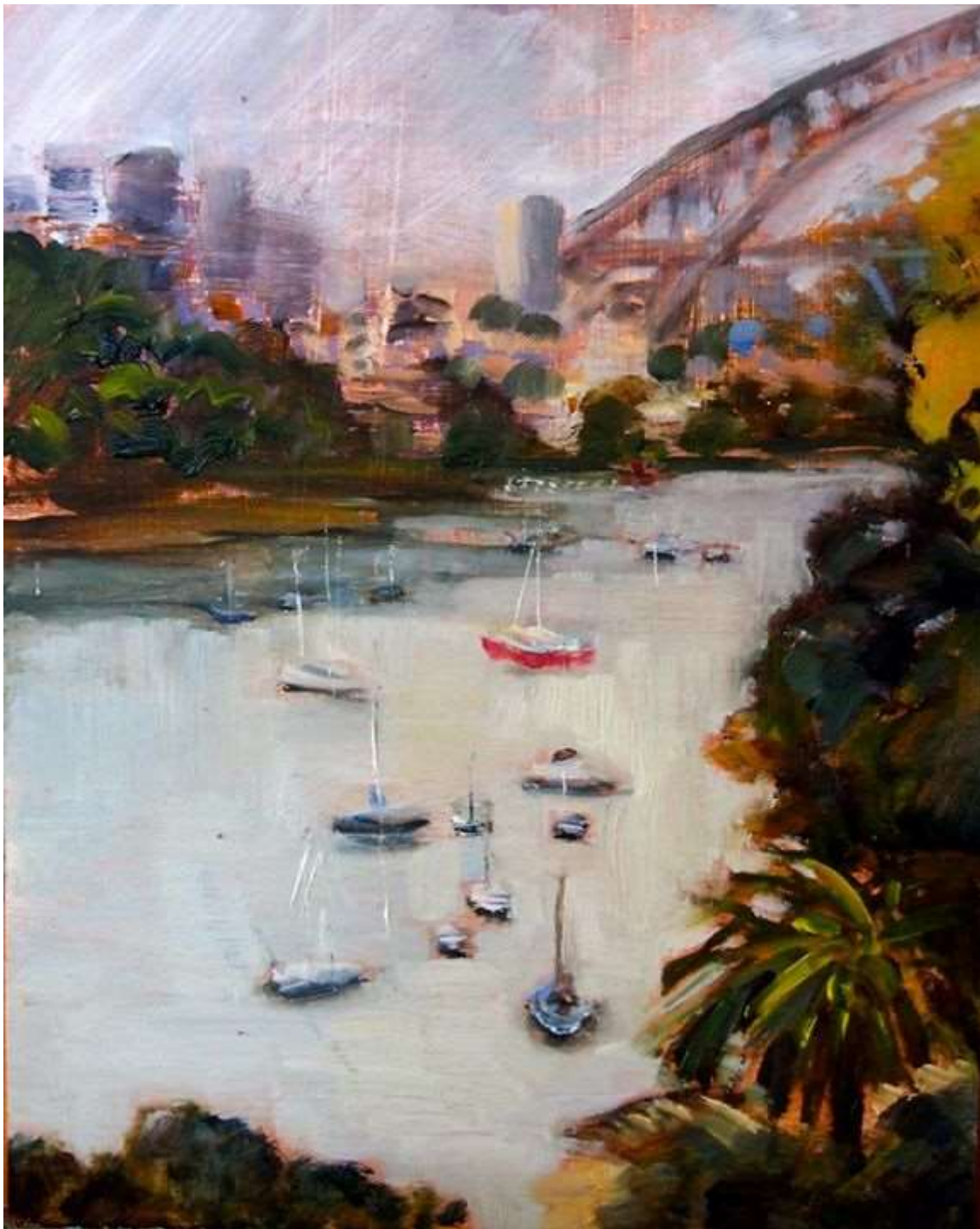
Unknown photographer. c. 1900 *Berrys Bay Sydney* Taken from Larkin St.

CONTEMPORARY ARTISTS

Artists and photographers continue to paint and photograph the Bay. Among these is Josephine JOSEPHSEN whose recent sketch of the Woodley's Boatshed captures the simplicity of the historic boatshed.



Another is Anne FIELD who loves the Bay and frequently paints round the foreshores. An exhibition of her work in February 2014 included images of familiar viewpoints such as the one below.



The lookout at the end of Larkin St is a popular site for tourists and photographers to view the vista of Sydney, the bridge and opera house. It is possible to walk around much of the bay but public access is not possible at Noakes marina or much of the shoreline of the Woodleys arm of the bay. In spite of this photographers manage to include natural features and capture some of the charm of earlier photographs. The following images were taken by local resident Michael Stevens.





Balls Head was denuded of trees in the early nineteen hundreds and is now a nature reserve. Carradah Park was the site of an oil terminal until 1993 when the infrastructure was removed and the area restored and proclaimed by Premier Bob Carr as a park for public access.



Berrys Bay from Balls Head to Carradah Park 2014